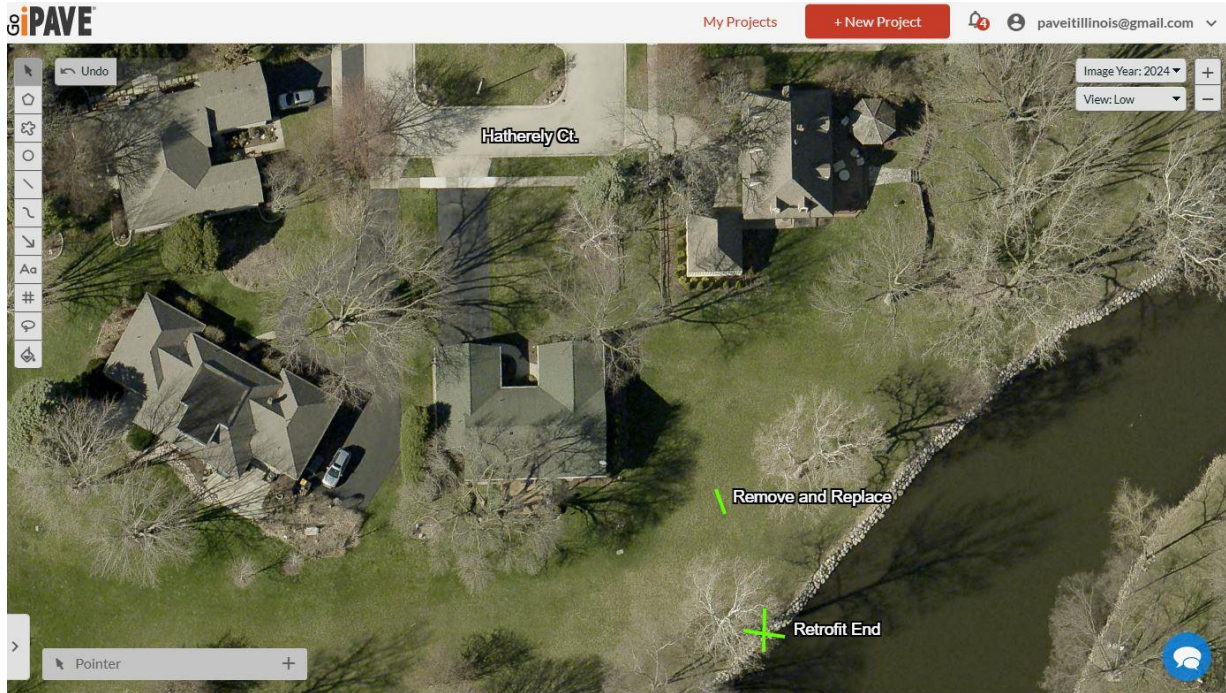


5&6 Hatherley Ct.



3 & 4 Hardwick Ct.

KaneGIS4 (4 x) Developed by GIS-Technologies

Map 2022 Hybrid Lat,Long About Help Themes

Find Address, Pin, Sub Please enter a search term.

Layers

- Forest/Preserve*
- Creeks
- FoxRiver
- Water
- WaterShad
- FEMALayers
- ADID
- Aquifer Major
- Aquifer Sensib
- Bedrock Lith
- Bedrock Topo
- Soils* Hydric*
- Topography*
- Municipalities
- Districts
- Railroads
- SalesBOR*
- Addresses*
- FarmLand*
- Streams*
- TP
- Storm Sewers*
- CADLine
- Storm Structures*
- CADNet*
- Drain Tiles*
- Cadastre/Subs*
- Flow Path
- Stormwater
- Detention Basins*
- Zoning
- Potential Flood Inundation*
- BaseMap

Stormwater Mapping Disclaimer
These layers represent planning level information based upon best available data collected to date by Kane County. No accuracy is assumed for the data delineated herein, unless expressed or implied by Kane County or its employees. The presence or absence of stormwater infrastructure must be field verified.

County Layers Disclaimer
These layers do not represent a survey. No accuracy is assumed for the data delineated herein, unless expressed or implied by Kane County or its employees. These layers are compiled from official records, including plats, surveys, recorded deeds, and contracts, and only contain information required for local government purposes. See the recorded documents for more detailed legal information.

Esri, NASA, NOAA, USGS, FEMA, Esri, Community Maps Contributors, County of Kane, © OpenStreetMap, Microsoft, Esri, TomTom, Garmin, SafeGraph, GeoTechnologies, Inc, METI/NASA, USGS, EPA, NPS, US Census Bureau, USDA, ... Powered by Esri

extent: xmin: -85.81114 90 ymin: -84.161171 xmin: 4178506.67 umax: 4178796.67 StatePlane Irvl: 567787 88464 1867015 7066671 Kane County Illinois



gPAVE My Projects + New Project pavellitllinois@gmail.com

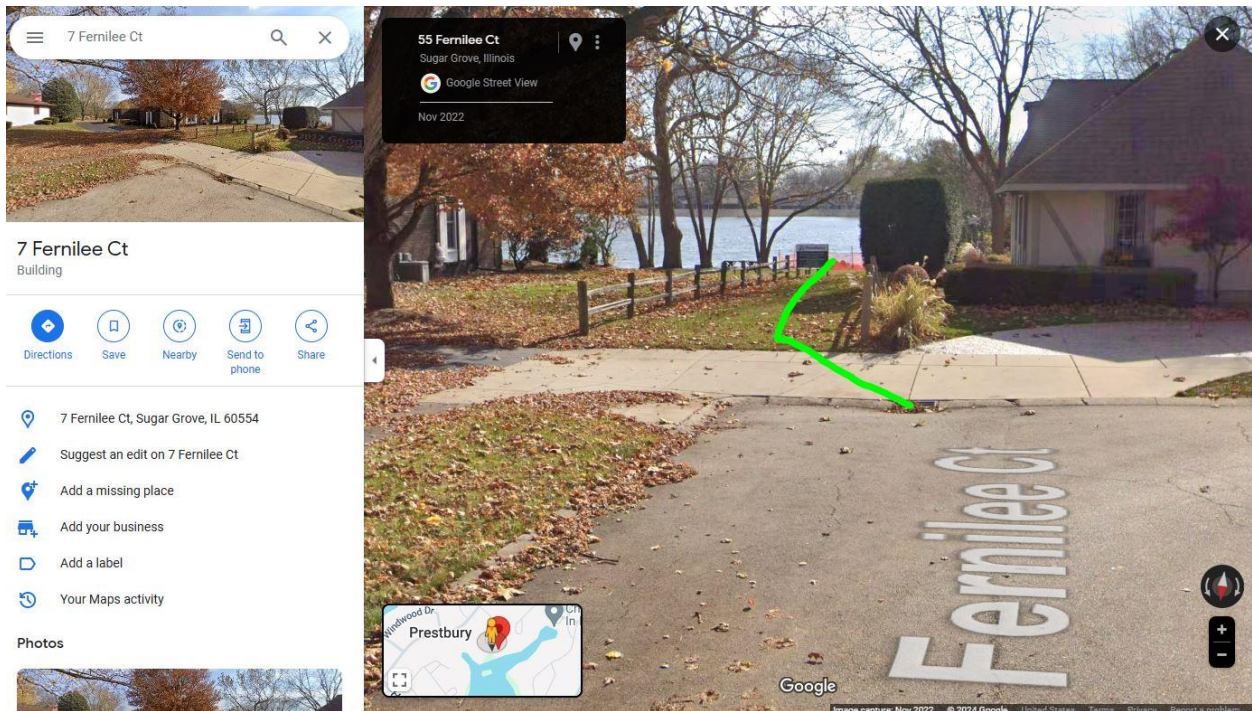
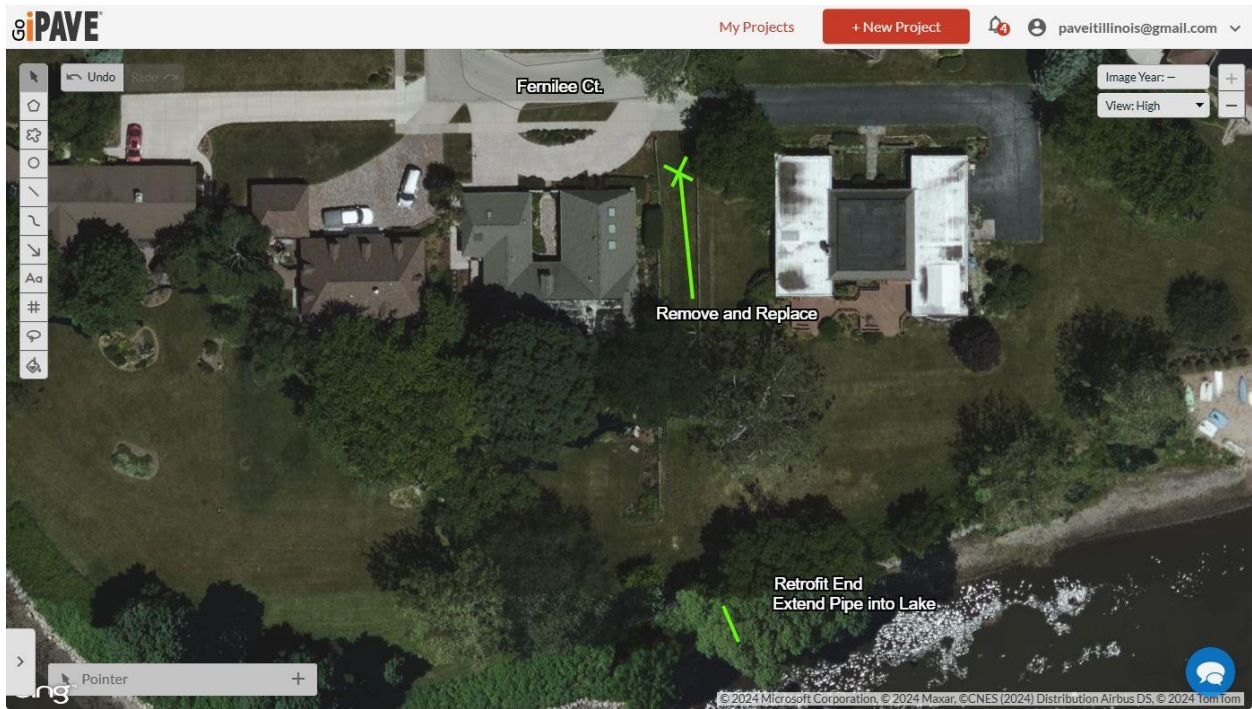
Undo Image Year: 2024 View: Low

3-4 Hardwick Ct

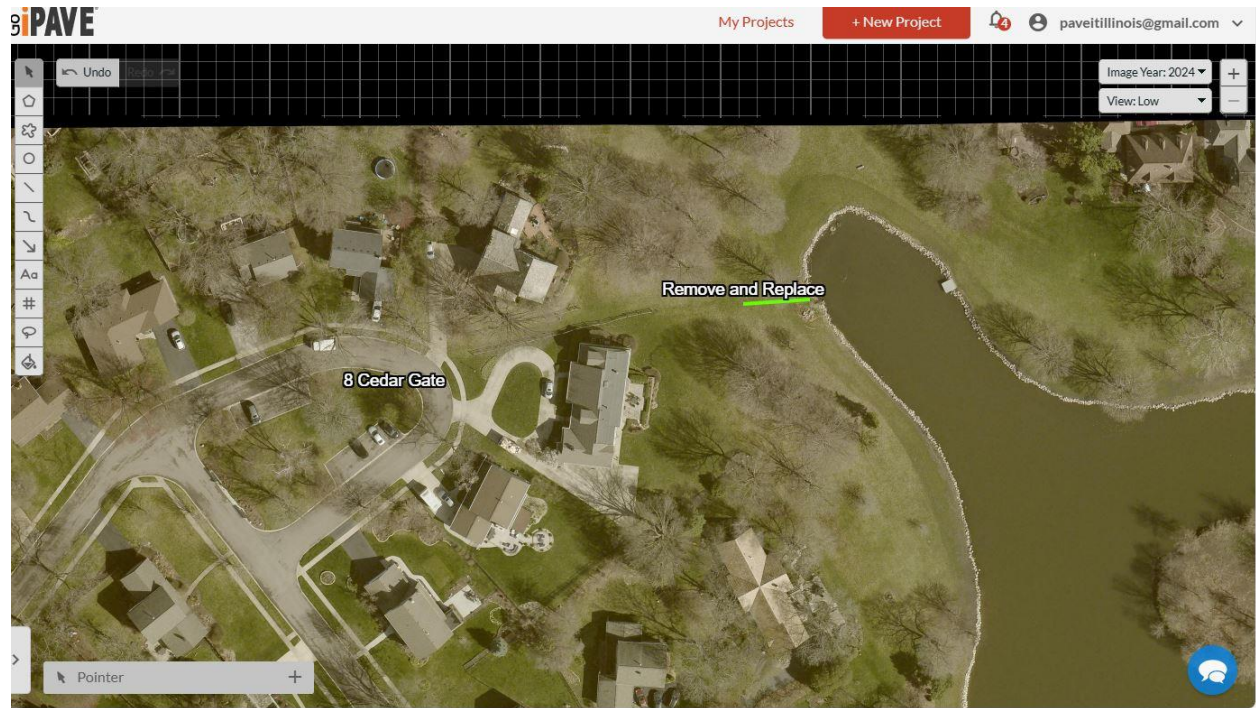
Remove and Replace

Pointer

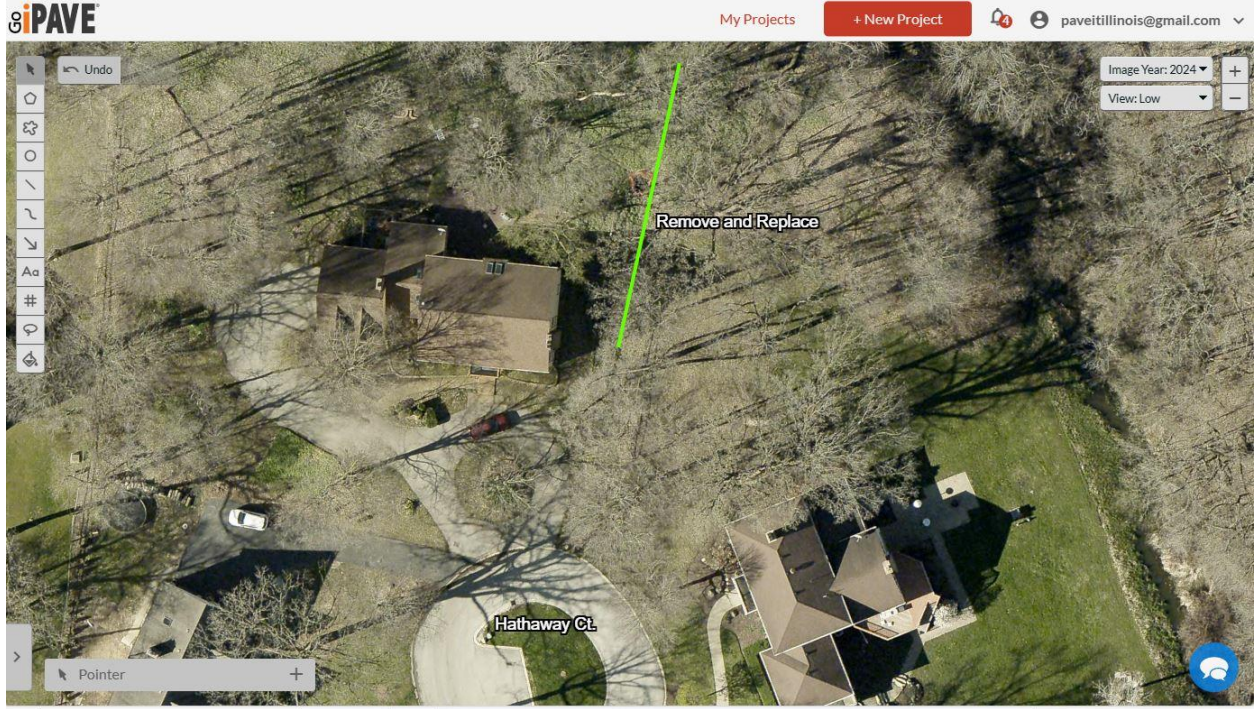
7-8 Fernilee Ct.



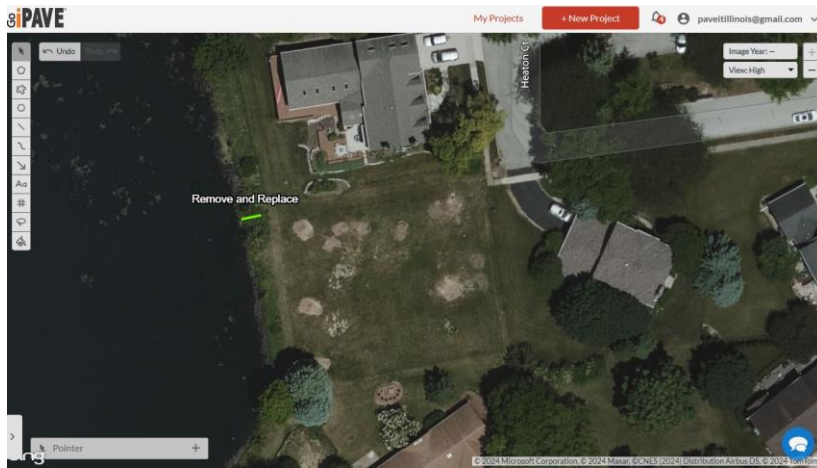
8 Cedar Gate



8 & 9 Hathaway Crescent



10 Heaton Ct.



KaneGIS4 (4.x) Developed by GIS-Technologies

Map 2022 Hybrid Lat/Lng About Help Themes

Find Address, Pin, Sub

Stormwater Mapping Disclaimer

These layers represent planning level information based upon best available data collected to date by Kane County. No accuracy is assumed for the data disseminated herein, either expressed or implied by Kane County or its employees. The presence or absence of stormwater infrastructure must be fact verified.

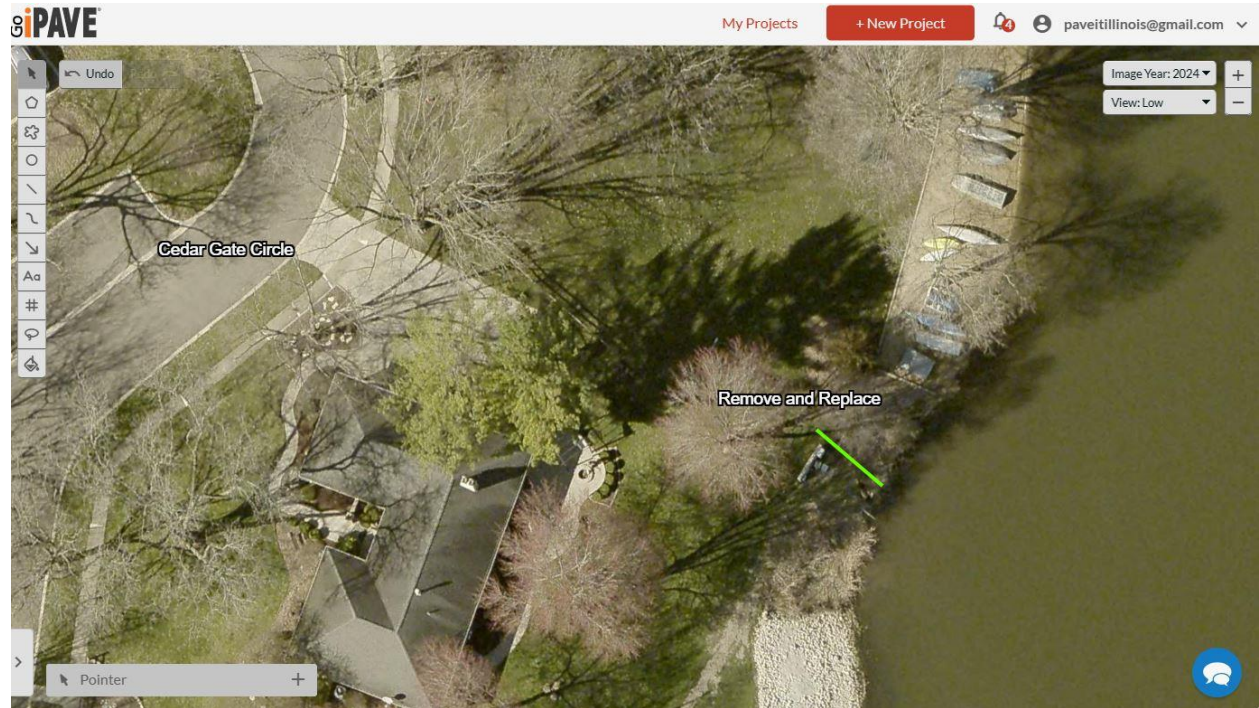
County Layers Disclaimer

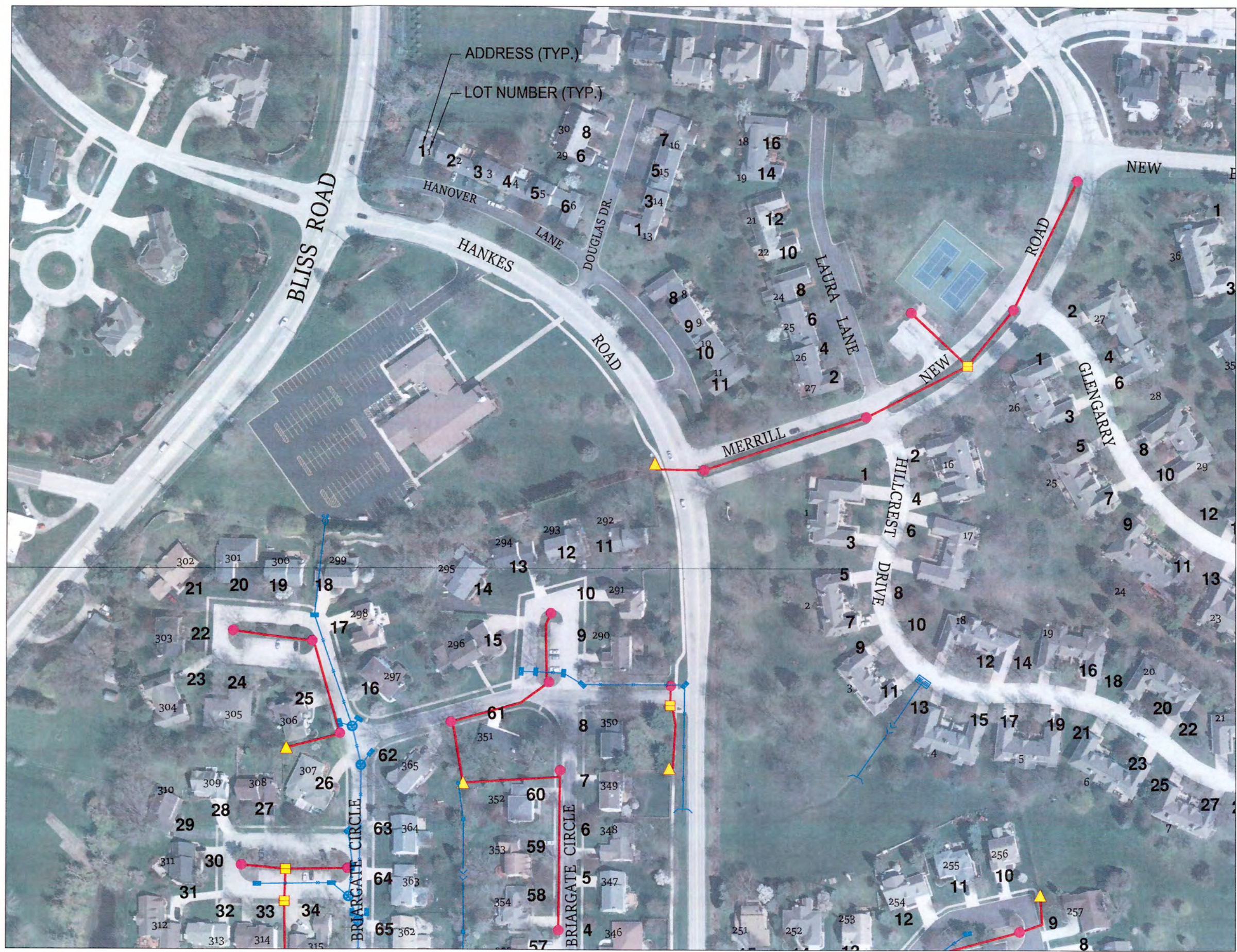
These layers do not represent a survey. No Accuracy is assumed for the data disseminated herein, either expressed or implied by Kane County or its employees. These layers are compiled from official records, including plats, surveys, recorded deeds, and contracts, and only contain information required for local government purposes. See the recorded documents for more detailed legal information.

ILL, NADA, NGA, USGS, FEMA | Esri Community Maps Contributors; County of Kane, © OpenStreetMap, Microsoft, Esri, TomTom, Garmin, Sat2Graph, GeoTechnologies, Inc., MIT/NASA, USGS, EPA, NPS, US Census Bureau, USGA, ...

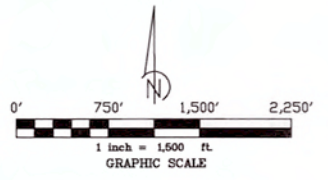
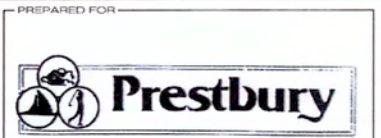
| Layers | |
|-----------------------------|------------|
| Fores/Preserve* | |
| Creeks | |
| FoxRiver | |
| Water | |
| WaterShed | |
| FEMALayers | |
| ADID | |
| Aquifer Major | |
| Aquifer Sensity | |
| Bedrock Lim | |
| Bedrock Topo | |
| Soils* Hydric* | |
| Topography* | |
| Municipalities | |
| Districts | |
| Railroads | |
| SalesBOR* | |
| Addresses* | |
| FarmLand* | |
| TIF | |
| CADLine | |
| CADText* | |
| CadastralSubs* | |
| Flow Path | Stormwater |
| Detention Basins* | Zoning |
| Potential Flood Inundation* | BaseMap |

14 Cedar Gate





ADDRESS (TYP.)
 LOT NUMBER (TYP.)



EXISTING UTILITIES LEGEND

- UNDERGROUND ELEC. CABLE FOR LIGHT POLES
- UNDERGROUND STORM PIPE
- ELEC. RISER
- ELEC. TRANSFORMER
- ELEC. HANDHOLE
- LIGHT POLE
- STORM MANHOLE
- CATCH BASIN (ROUND)
- STORM CLEANOUT
- CATCH BASIN (RECTANGULAR)
- CULVERT/FLARED END SECTION

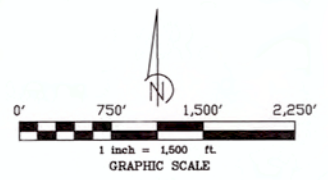
DESIGN REVISIONS

| NO. | DATE | REVISIONS | BY |
|-----|------|-----------|----|
| | | | |



PREPARED BY: 2017-0536
 PROJECT NO:
 PREPARED BY: J.H.
 APPROVED BY: J.L.

SHEET NAME
UNDERGROUND STREET LIGHT CABLE AND STORM INFORMATION SHEET 01 OF 13

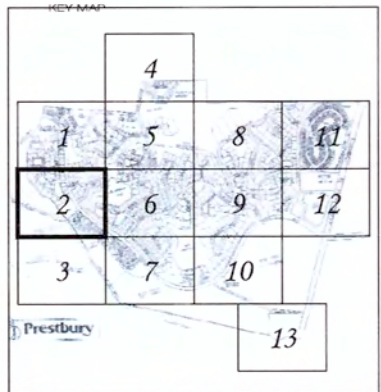


EXISTING UTILITIES LEGEND

- UNDERGROUND ELEC. CABLE FOR LIGHT POLES
- UNDERGROUND STORM PIPE
- ELEC. RISER
- ELEC. TRANSFORMER
- ▨ ELEC. HANDHOLE
- LIGHT POLE
- ⊙ STORM MANHOLE
- ⊖ CATCH BASIN (ROUND)
- ⊗ STORM CLEANOUT
- ⊞ CATCH BASIN (RECTANGULAR)
- CULVERT/FLARED END SECTION

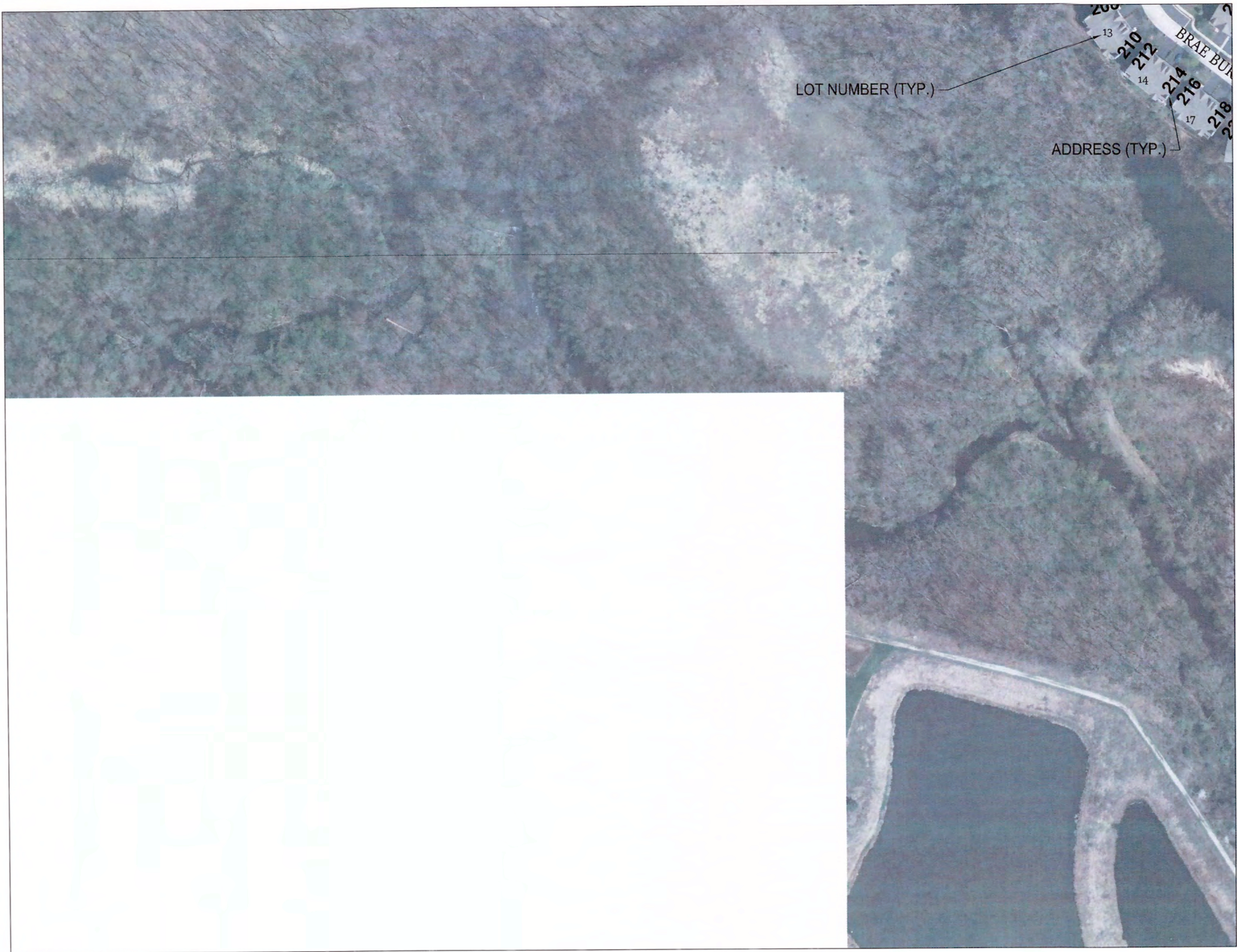
DESIGN REVISIONS


| NO. | DATE | REVISIONS | BY |
|-----|------|-----------|----|
| | | | |



PREPARED BY: _____
 PROJECT NO: 2017-0536
 PREPARED BY: J.H.
 APPROVED BY: J.L.

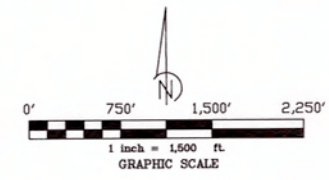
SHEET NAME:
UNDERGROUND STREET LIGHT CABLE AND STORM INFORMATION SHEET 02 OF 13














PREPARED FOR


PREPARED BY

 CONSULTING ENGINEERS - LAND SURVEYORS

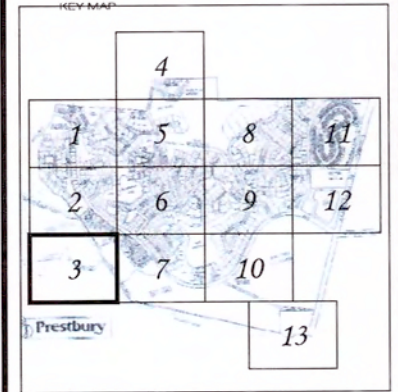


EXISTING UTILITIES LEGEND

-  UNDERGROUND ELEC. CABLE FOR LIGHT POLES
-  UNDERGROUND STORM PIPE
-  ELEC. RISER
-  ELEC. TRANSFORMER
-  ELEC. HANDHOLE
-  LIGHT POLE
-  STORM MANHOLE
-  CATCH BASIN (ROUND)
-  STORM CLEANOUT
-  CATCH BASIN (RECTANGULAR)
-  CULVERT/FLARED END SECTION

DESIGN REVISIONS

| NO. | DATE | REVISIONS | BY |
|-----|------|-----------|----|
| | | | |

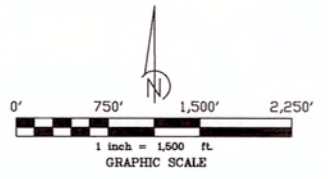


PREPARED BY
 PROJECT NO: 2017-0536
 PREPARED BY: J.H.
 APPROVED BY: J.L.

SHEET NAME
 UNDERGROUND STREET
 LIGHT CABLE
 AND STORM INFORMATION
 SHEET 03 OF 13



ADDRESS (TYP.)
 LOT NUMBER (TYP.)

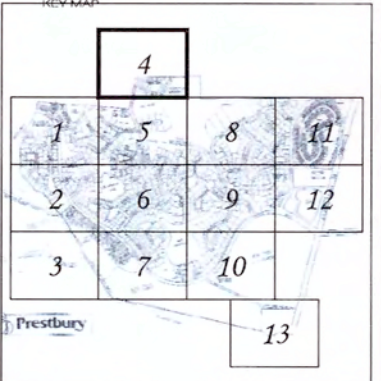


EXISTING UTILITIES LEGEND

- UNDERGROUND ELEC. CABLE FOR LIGHT POLES
- UNDERGROUND STORM PIPE
- ELEC. RISER
- ELEC. TRANSFORMER
- ELEC. HANDHOLE
- LIGHT POLE
- STORM MANHOLE
- CATCH BASIN (ROUND)
- STORM CLEANOUT
- CATCH BASIN (RECTANGULAR)
- CULVERT/FLARED END SECTION

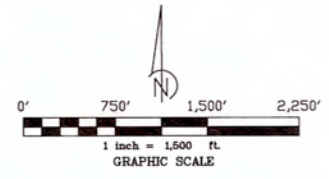
DESIGN REVISIONS

| NO. | DATE | REVISIONS | BY |
|-----|------|-----------|----|
| | | | |



PREPARED BY
 PROJECT NO: 2017-0536
 PREPARED BY: J.H.
 APPROVED BY: J.L.

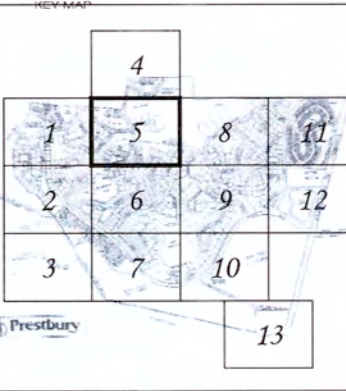
SHEET NAME
UNDERGROUND STREET LIGHT CABLE AND STORM INFORMATION SHEET 04 OF 13



- EXISTING UTILITIES LEGEND**
- UNDERGROUND ELEC. CABLE FOR LIGHT POLES
 - UNDERGROUND STORM PIPE
 - ELEC. RISER
 - ELEC. TRANSFORMER
 - ELEC. HANDHOLE
 - LIGHT POLE
 - STORM MANHOLE
 - CATCH BASIN (ROUND)
 - STORM CLEANOUT
 - CATCH BASIN (RECTANGULAR)
 - CULVERT/FLARED END SECTION

DESIGN REVISIONS

| NO. | DATE | REVISIONS | BY |
|-----|------|-----------|----|
| | | | |
| | | | |

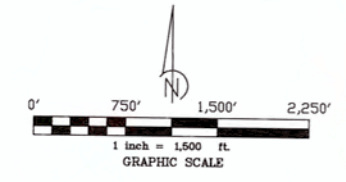


PREPARED BY: J.H.
 PROJECT NO: 2017-0536
 APPROVED BY: J.L.

SHEET NAME
UNDERGROUND STREET LIGHT CABLE AND STORM INFORMATION SHEET 05 OF 13



ADDRESS (TYP.)
 LOT NUMBER (TYP.)

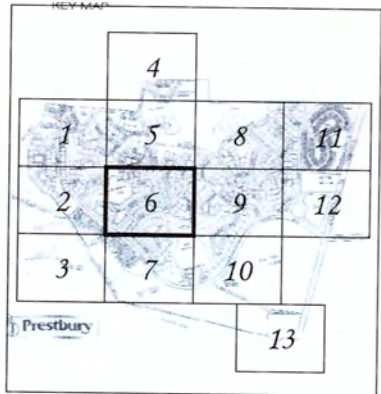


EXISTING UTILITIES LEGEND

- UNDERGROUND ELEC. CABLE FOR LIGHT POLES
- UNDERGROUND STORM PIPE
- ELEC. RISER
- ELEC. TRANSFORMER
- ELEC. HANDHOLE
- LIGHT POLE
- ⊙ STORM MANHOLE
- ⊙ CATCH BASIN (ROUND)
- ⊙ STORM CLEANOUT
- ⊙ CATCH BASIN (RECTANGULAR)
- CULVERT/FLARED END SECTION

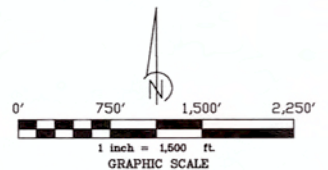
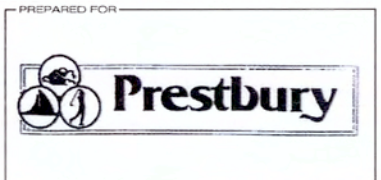
DESIGN REVISIONS

| NO. | DATE | REVISIONS | BY |
|-----|------|-----------|----|
| | | | |



PREPARED BY: _____
 PROJECT NO: 2017-0536
 PREPARED BY: J.H.
 APPROVED BY: J.L.

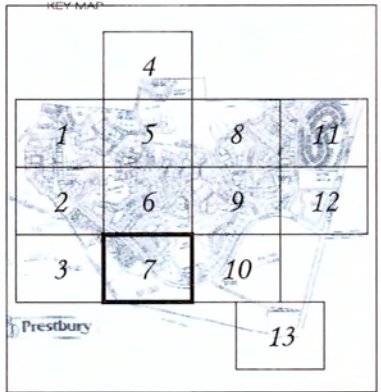
SHEET NAME
UNDERGROUND STREET LIGHT CABLE AND STORM INFORMATION SHEET 06 OF 13



- EXISTING UTILITIES LEGEND
- UNDERGROUND ELEC. CABLE FOR LIGHT POLES
 - UNDERGROUND STORM PIPE
 - ELEC. RISER
 - ELEC. TRANSFORMER
 - ELEC. HANDHOLE
 - LIGHT POLE
 - STORM MANHOLE
 - CATCH BASIN (ROUND)
 - STORM CLEANOUT
 - CATCH BASIN (RECTANGULAR)
 - CULVERT/FLARED END SECTION

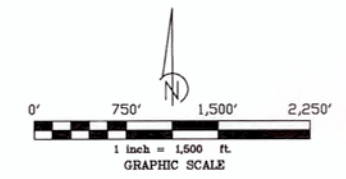
DESIGN REVISIONS

| NO. | DATE | REVISIONS | BY |
|-----|------|-----------|----|
| | | | |
| | | | |



PREPARED BY: _____
 PROJECT NO.: 2017-0536
 PREPARED BY: J.H.
 APPROVED BY: J.L.

SHEET NAME
 UNDERGROUND STREET LIGHT CABLE AND STORM INFORMATION SHEET 07 OF 13

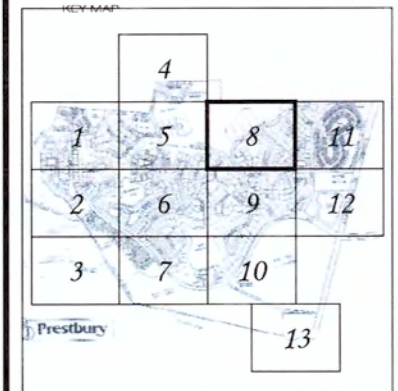


EXISTING UTILITIES LEGEND

- UNDERGROUND ELEC. CABLE FOR LIGHT POLES
- UNDERGROUND STORM PIPE
- ELEC. RISER
- ELEC. TRANSFORMER
- ELEC. HANDHOLE
- LIGHT POLE
- STORM MANHOLE
- CATCH BASIN (ROUND)
- STORM CLEANOUT
- CATCH BASIN (RECTANGULAR)
- CULVERT/FLARED END SECTION

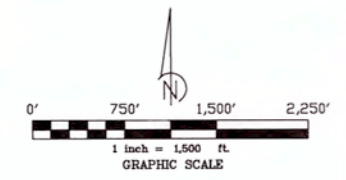
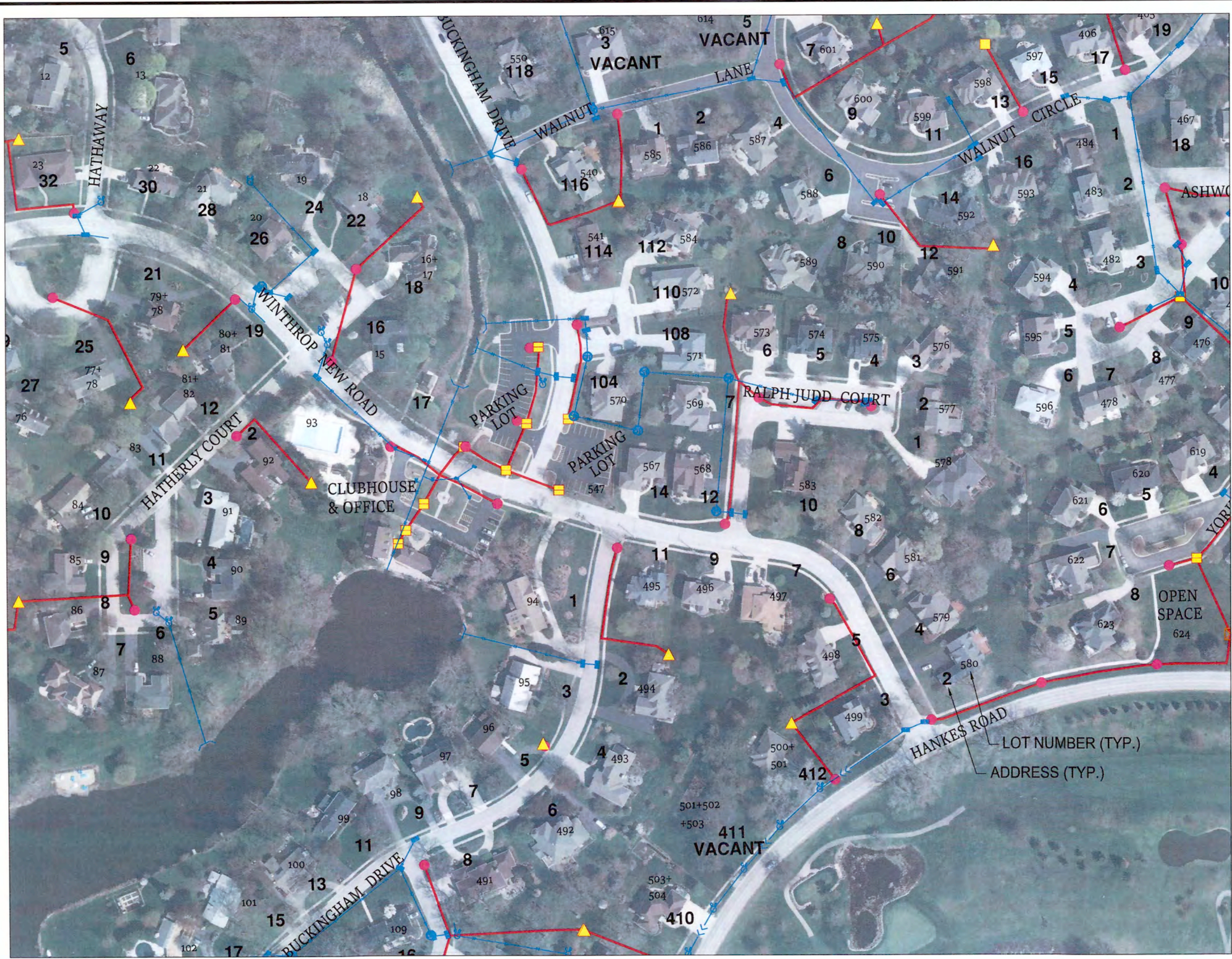
DESIGN REVISIONS

| NO. | DATE | REVISIONS | BY |
|-----|------|-----------|----|
| | | | |



PREPARED BY
 PROJECT NO: 2017-0536
 PREPARED BY: J.H.
 APPROVED BY: J.L.

SHEET NAME
UNDERGROUND STREET LIGHT CABLE AND STORM INFORMATION SHEET 08 OF 13

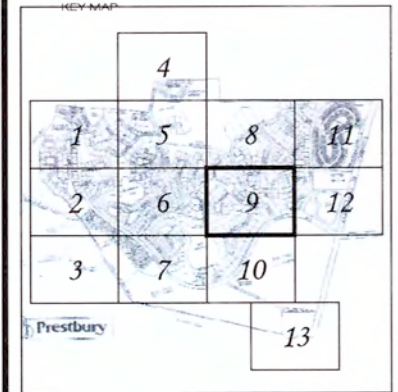


EXISTING UTILITIES LEGEND

- UNDERGROUND ELEC. CABLE FOR LIGHT POLES
- UNDERGROUND STORM PIPE
- ELEC. RISER
- ELEC. TRANSFORMER
- ELEC. HANDHOLE
- LIGHT POLE
- STORM MANHOLE
- CATCH BASIN (ROUND)
- STORM CLEANOUT
- CATCH BASIN (RECTANGULAR)
- CULVERT/FLARED END SECTION

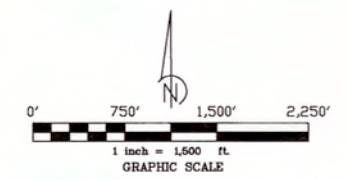
DESIGN REVISIONS

| NO. | DATE | REVISIONS | BY |
|-----|------|-----------|----|
| | | | |



PREPARED BY: PROJECT NO: 2017-0536
 PREPARED BY: J.H.
 APPROVED BY: J.L.

SHEET NAME
 UNDERGROUND STREET LIGHT CABLE AND STORM INFORMATION SHEET 09 OF 13

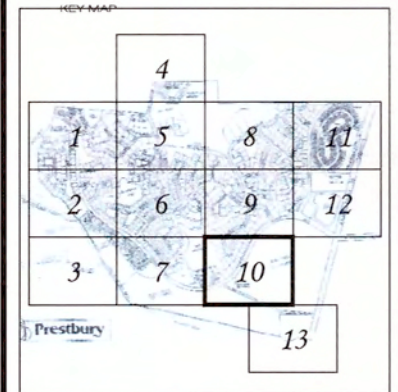


EXISTING UTILITIES LEGEND

- UNDERGROUND ELEC. CABLE FOR LIGHT POLES
- UNDERGROUND STORM PIPE
- ELEC. RISER
- ELEC. TRANSFORMER
- ELEC. HANDHOLE
- LIGHT POLE
- STORM MANHOLE
- CATCH BASIN (ROUND)
- STORM CLEANOUT
- CATCH BASIN (RECTANGULAR)
- CULVERT/FLARED END SECTION

DESIGN REVISIONS

| NO. | DATE | REVISIONS | BY |
|-----|------|-----------|----|
| | | | |
| | | | |



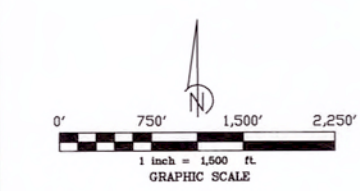
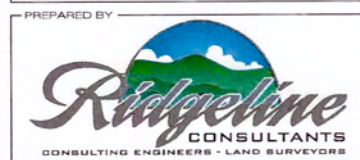
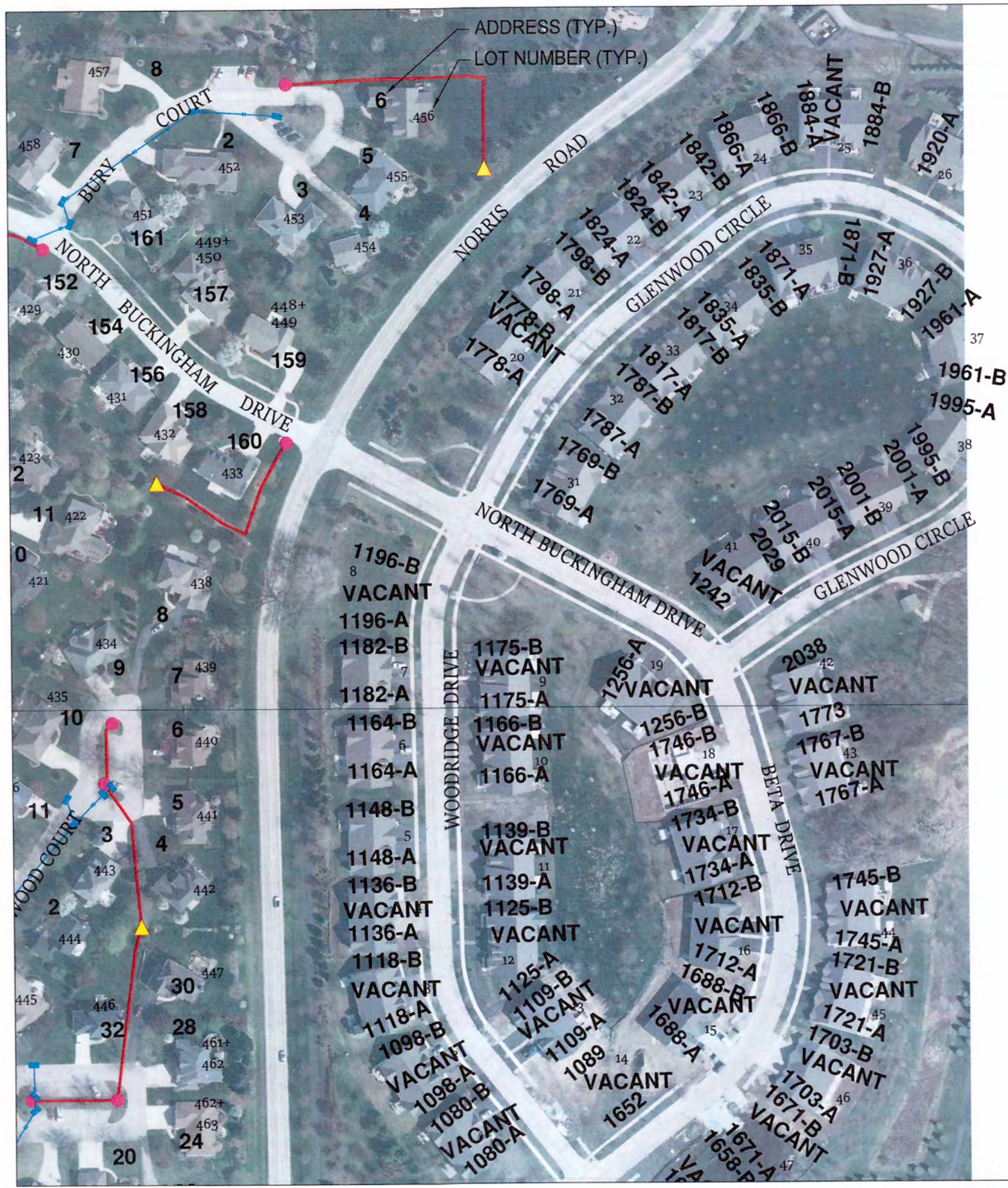
PREPARED BY: _____

PROJECT NO: 2017-0536

PREPARED BY: J.H.

APPROVED BY: J.L.

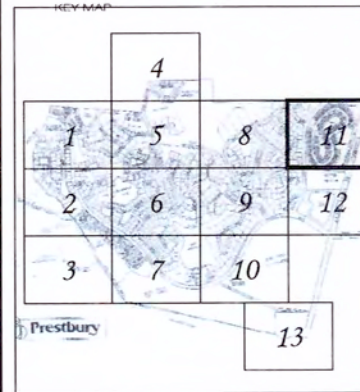
SHEET NAME
UNDERGROUND STREET LIGHT CABLE AND STORM INFORMATION SHEET 10 OF 13



- EXISTING UTILITIES LEGEND
- UNDERGROUND ELEC. CABLE FOR LIGHT POLES
 - UNDERGROUND STORM PIPE
 - ELEC. RISER
 - ELEC. TRANSFORMER
 - ELEC. HANDHOLE
 - LIGHT POLE
 - STORM MANHOLE
 - CATCH BASIN (ROUND)
 - STORM CLEANOUT
 - CATCH BASIN (RECTANGULAR)
 - CULVERT/FLARED END SECTION

DESIGN REVISIONS

| NO. | DATE | REVISIONS | BY |
|-----|------|-----------|----|
| | | | |



PREPARED BY: J.H.
PROJECT NO: 2017-0536
APPROVED BY: J.L.

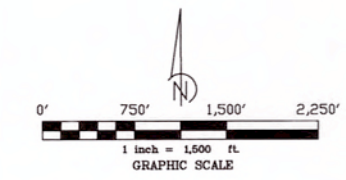
SHEET NAME
UNDERGROUND STREET LIGHT CABLE AND STORM INFORMATION SHEET 11 OF 13









PREPARED FOR


PREPARED BY

 CONSULTING ENGINEERS - LAND SURVEYORS

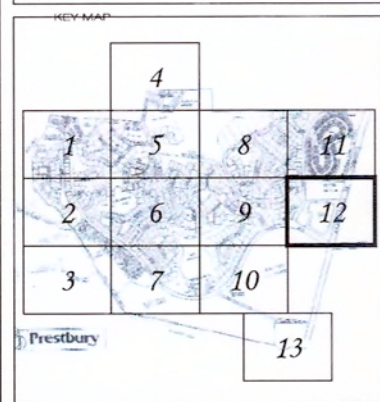


EXISTING UTILITIES LEGEND

-  UNDERGROUND ELEC. CABLE FOR LIGHT POLES
-  UNDERGROUND STORM PIPE
-  ELEC. RISER
-  ELEC. TRANSFORMER
-  ELEC. HANDHOLE
-  LIGHT POLE
-  STORM MANHOLE
-  CATCH BASIN (ROUND)
-  STORM CLEANOUT
-  CATCH BASIN (RECTANGULAR)
-  CULVERT/FLARED END SECTION

DESIGN REVISIONS


| NO. | DATE | REVISIONS | BY |
|-----|------|-----------|----|
| | | | |



PREPARED BY
 PROJECT NO: 2017-0536
 PREPARED BY: J.H.
 APPROVED BY: J.L.

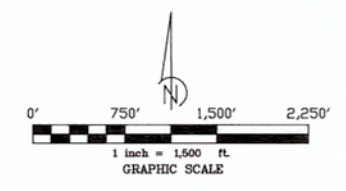
SHEET NAME
 UNDERGROUND STREET LIGHT CABLE AND STORM INFORMATION SHEET 12 OF 13











PREPARED FOR


PREPARED BY

 CONSULTING ENGINEERS - LAND SURVEYORS



EXISTING UTILITIES LEGEND

-  UNDERGROUND ELEC. CABLE FOR LIGHT POLES
-  UNDERGROUND STORM PIPE
-  ELEC. RISER
-  ELEC. TRANSFORMER
-  ELEC. HANDHOLE
-  LIGHT POLE
-  STORM MANHOLE
-  CATCH BASIN (ROUND)
-  STORM CLEANOUT
-  CATCH BASIN (RECTANGULAR)
-  CULVERT/FLARED END SECTION

DESIGN REVISIONS

| NO. | DATE | REVISIONS | BY |
|-----|------|-----------|----|
| | | | |
| | | | |



PREPARED BY: _____
 PROJECT NO: 2017-0536
 PREPARED BY: J.H.
 APPROVED BY: J.L.

SHEET NAME
 UNDERGROUND STREET
 LIGHT CABLE
 AND STORM INFORMATION
 SHEET 13 OF 13